

Why Trust Airshore

Photo:

The Hurst-Airshore Triple Column in use (US Pentagon, September, 2001) providing initial structural stabilization until permanent wood shores could be erected. These columns were set in place by FEMA US&R Virginia Task Force II during the initial days of operations at the Pentagon.

Our History.

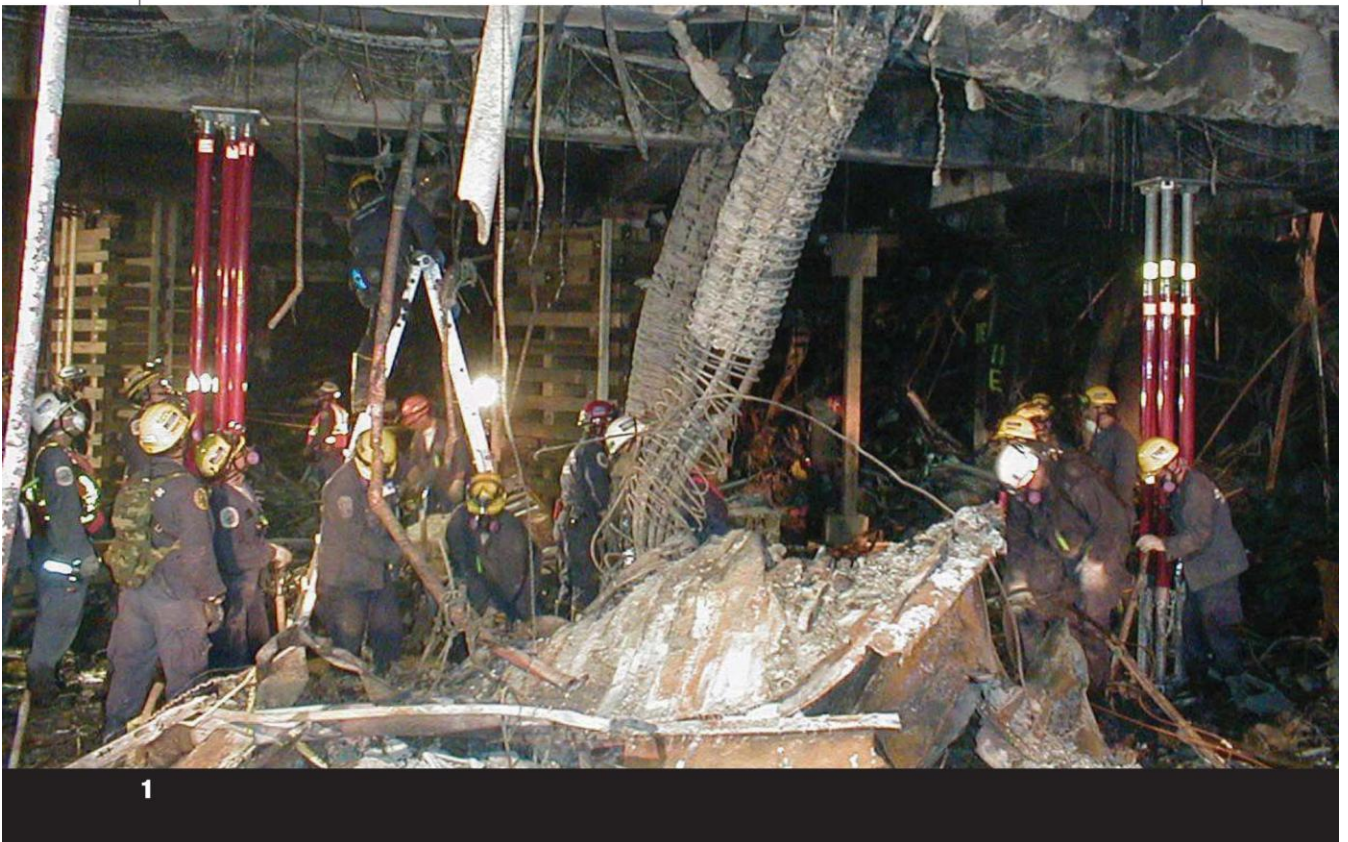
Airshore, the architect of the world's first Aluminum Rescue Strut, has the knowledge and expertise in design and development to provide the highest level of trust in your equipment during difficult situations. For over 20 years, Airshore has been trusted by more rescue professionals and US&R teams than any other rescue strut.

Our Commitment.

We engineer and manufacture the highest quality aluminum rescue shoring.

We understand the rescue professional — we continually improve our products and seek to create new and more innovative solutions.

We remain focused on safety, never forgetting the service of our market to the community and remembering the reason for our service to the market.



Airshore Product Improvement

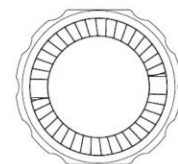
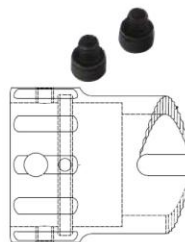
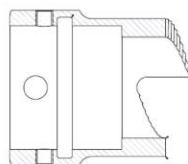
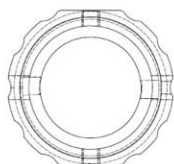
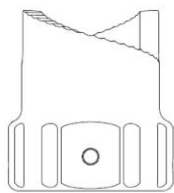
Enhanced Collar

Rescue professionals told us how much they loved our collar design and its two pin system. It's safe, easy, effective and has a built-in early warning system unmatched by any other product available today. Our new design eliminates the possibility of the collar shifting while transporting the strut at the rescue scene.

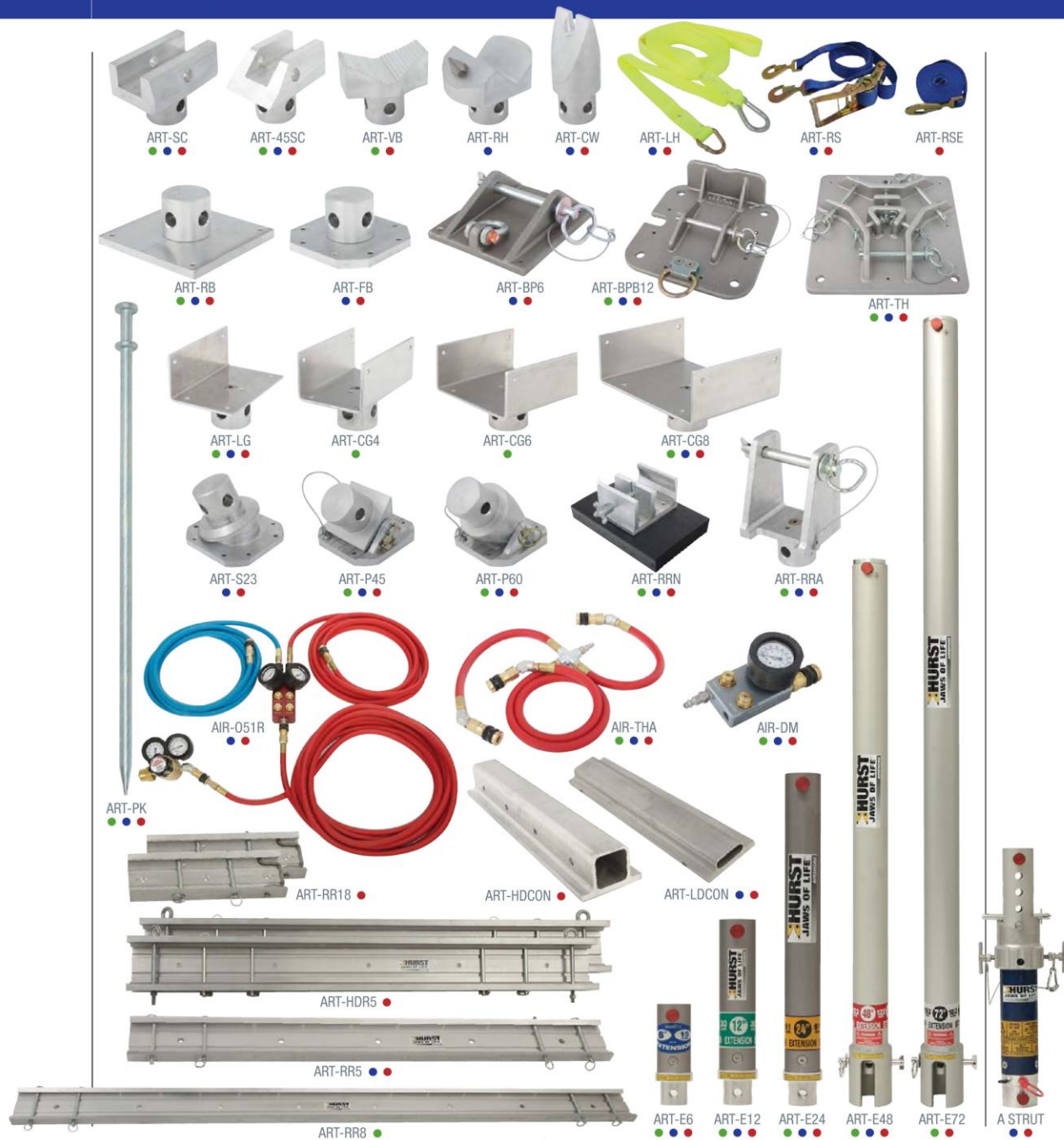
The collar design uses two set screws along with a scored interior that allows the collar to swivel freely on the strut but not slide out of position. The new design is retrofittable to most previous Airshore struts.



ENHANCED COLLAR
RETRO-FIT KIT
PART #377A351



Structural Collapse Kits



368A022
Building
Collapse
Kit

368A027
Urban Search
& Rescue Lite
Kit

368A026
Urban Search
& Rescue
Kit



Quantity	Quantity	Quantity	Part	Name
	4	6	A	Airshore Rescue Strut
6		6	B	Airshore Rescue Strut
6	4	6	C	Airshore Rescue Strut
4	3	6	E4.5-7	Airshore Rescue Strut
4	3	6	F7-11	Airshore Rescue Strut
6	4	6	ART-E6	6" Extension
6	4	6	ART-E12	12" Extension
6	4	6	ART-E24	24" Extension
4	2	4	ART-E48	48" Extension
4		4	ART-E72	72" Extension
	8	14	ART-S23	23° Swivel Base
	2	4	ART-BP6	6" Base Plate
	8	14	ART-FB	Flat Base
6	8	12	ART-RB	Rigid Base
4	3	4	ART-BPB12	12" Base Plate with Bracket
2	2	2	ART-TH	Tripod Head
2			ART-CG4	4" C-Grip
2			ART-CG6	6" C-Grip
4	6	6	ART-CG8	8" C-Grip
4	4	6	ART-LG	L-Grip
4	2	4	ART-P60	60° Pivot
4	2	4	ART-P45	45° Pivot
2		2	ART-VB	V-Block
6	6	6	ART-SC	Static Clevis
4	4	4	ART-45SC	45° Static Clevis
	2		ART-RH	Rhino Head Attachment
	2	2	ART-CW	Chain Wedge
	4	4	ART-RR5	5' Raker Rail
4			ART-RR8	8' Raker Rail
		6	ART-RR18	18" Spot Shore Rails (Sets of 2)
		4	ART-HDR5	5' Heavy Duty Rails (Sets of 2)
12	4	12	ART-RRN	Raker Rail Nailers
4	2	4	ART-RRR	Raker Rail Adapter
	2	2	ART-LDCON	Light Duty Rail Connector
	4	4	ART-HDCON	Heavy Duty Rail Connector
	4	4	ART-RS	Ratchet Strap
		2	ART-RSE	Ratchet Strap Extension
	1	1	ART-AFK	A-Frame Kit
	1	1	AIR-051R	Dual High Pressure Air Supply Assembly
1	1	1	AIR-DM	Deadman Control
1	1	1	AIR-THA	Tripod Hose Assembly
	2	2	ART-LH	Lowering Hook
1	1	1	364A026	Safety Chain
8	4	8	ART-PK	Picket
1,327.8 lbs (601.5 kg)	981.05 lbs (445 kg)	2,181.7 lbs (988.3 kg)	Total Kit Weight	