

LUKAS

Because you never get a second chance



STRONGARM™



Quickly overcome obstacles

The LE 100 StrongArm from **LUKAS** is a strong tool for the police and special operations commandos. The multifunctional device overcomes all obstacles and saves time when it is most needed. It cuts through locks, bars, chains or cables, pushes obstacles such as bars out of the way and opens locks. The door opener tips can be used to quickly open various gates and doors to buildings and flats or lift obstacles. The StrongArm also opens vehicle doors, boots and bonnets. The device is powered by a high-performance battery and provides full performance even in extreme conditions.

Better safe than sorry - with the LE 100 StrongArm from **LUKAS**.



Facts & benefits

- + cuts steel bars with thickness up to 22mm and chains up to 10mm
- + lifts and moves obstacles weighing up to 4t
- + opens building doors in the event of fire
- + opens vehicle doors
- + cuts bars and locks
- + easily breaks locks
- + works at temperatures up to +120°C
- + easy to change attachments thanks to large locking knobs
- + protection class IP 54

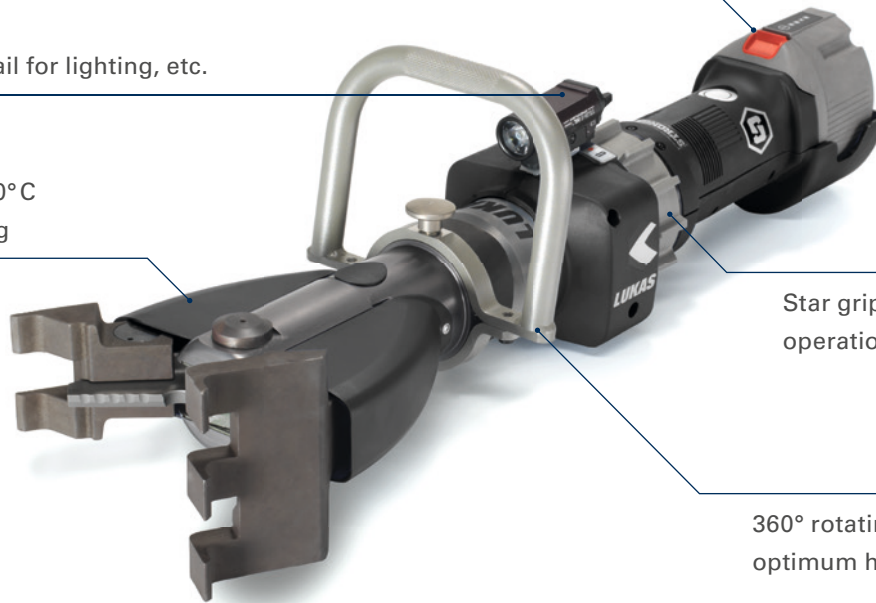


LE 100 StrongArm – Clears the way, in an instant

Lithium ion battery with charge level indicator,
heat-resistant to +120°C

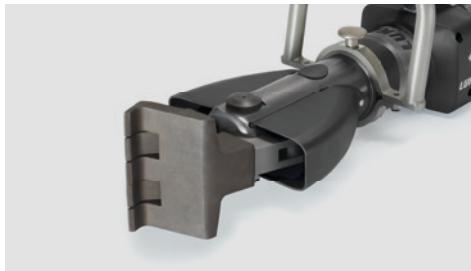
Universal fitting rail for lighting, etc.

Full performance at up to +120°C
thanks to heat-resistant casing



Star grip for user-friendly
operation

360° rotating handle – for
optimum hold in 4 positions



Open doors and windows, lift loads
with door opener tips



Spread and cut with the combi tips



Cut chains, locks and steel parts
without tips

 Technical specifications	LE 100 StrongArm
Cutting force up to	34,845 lbs / 155 kN
Steel bars up to*	0,87 in. / 22,2 mm
Blade opening with combi tips	8.15 in. / 207 mm
Spreading force	6300 lbf – 157.000 lbf / 28 kN – 700 kN
Spreading distance with door opener tips	7.3 in. / 184 mm
Spreading distance with combi tips	8.5 in. / 215 mm
Dimensions with combi tips: L x W x H	31.3 x 7.7 x 8.3 in. / 796 x 195 x 210 mm
Weight**	21.6 lbs / 9,8 kg
NFPA cutting classes	A5/B3/C5/D6/E6

*in accordance with EN 13204, NFPA 1936 **Weight without battery and tips Battery weight: 2.9 lbs / 1,3 kg
delivered as starter kit with battery, battery charger, door opener tips and combi tips

WEBCODE: ploame

Scan this QR code for further information.

